

THT Labels: Tamper Indicating

www.BradyID.com



Tamper Indicating Labels

High quality labels to protect against counterfeiting, diversion and tampering.

Brady offers an assortment of standard and custom engineered tamper indicating labels to meet your particular product protection needs. These tamper seals and tamper indicating labels provide irreversible, visible evidence of tampering to protect against warranty fraud, product tampering, alteration, and misuse or asset theft. Tamper indicating labels can protect your product's unique model and serial number, and help reduce the chance of liability issues due to unauthorized service or misuse.

! Understanding THT Label Part Numbers

Most label part numbers can be broken down in the following manner by the label's components.

Example:

THT-5-426-10

Technology: Thermal Transfer	Die Cut: #5, 1.000" x 0.500"	Package Qty: 10,000
	Material Number: B-426, Amber, Polyimide	

Printer Compatibility

All tamper indicating label parts shown on pages 148-150 are compatible with the following printers unless otherwise noted.

Recommended Printers



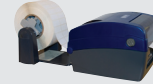
**Bradyprinter™
PR Plus Printers**
See Page 80



Brady IP™ Printer
See Page 76



BBP®81 Label Printer
See Page 78



BBP®11 Label Printer
3" Core Label Rolls are compatible when used with Media Holder accessory. See Page 68

3" Core Tamper Indicating Labels:

B-351 Destructible Vinyl Labels

Color: White Finish: Matte

White vinyl material with matte finish and permanent adhesive. Tamper evident material fractures to show signs of product tampering and prevent one-piece label removal. Use caution when removing from liner as material is fragile. Ideal for rating and serial plates.

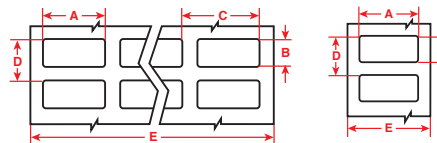


Figure 1

Figure 2

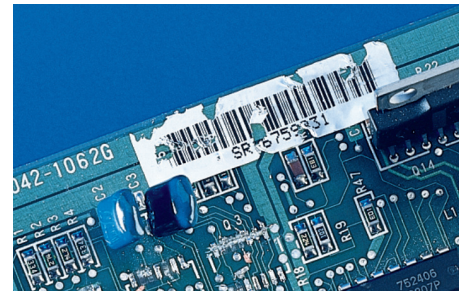


Diagram	Part Number	Material	Color	Label Width A Inch (mm)	Label Height B Inch (mm)	Horiz. Repeat C Inch (mm)	Vert. Repeat D Inch (mm)	Web Width E Inch (mm)	Labels Per Row	Labels Per Pkg	Rec. Ribbon
Fig. 1	THT-12-351-10	Vinyl	White	0.500 (12.7)	0.437 (11.1)	0.662 (16.8)	0.537 (13.6)	3.350 (85.1)	5	10,000	R6207
Fig. 1	THT-14-351-10	Vinyl	White	0.650 (16.5)	0.200 (5.1)	0.700 (17.8)	0.300 (7.6)	2.950 (74.9)	4	10,000	R6202
Fig. 1	THT-1-351-10	Vinyl	White	0.750 (19.1)	0.250 (6.4)	0.800 (20.3)	0.350 (8.9)	3.350 (85.1)	4	10,000	R6207
Fig. 1	THT-5-351-10	Vinyl	White	1.000 (25.4)	0.500 (12.7)	1.075 (27.3)	0.600 (15.2)	3.350 (85.1)	3	10,000	R6207
Fig. 2	THT-59-351-10	Vinyl	White	1.000 (25.4)	0.500 (12.7)	-	0.600 (15.2)	1.200 (30.5)	1	10,000	R6206
Fig. 1	THT-37-351-10	Vinyl	White	1.500 (38.1)	0.500 (12.7)	1.650 (41.9)	0.600 (15.2)	3.350 (85.1)	2	10,000	R6207
Fig. 1	THT-4-351-10	Vinyl	White	1.500 (38.1)	0.250 (6.4)	1.650 (41.9)	0.350 (8.9)	3.350 (85.1)	2	10,000	R6207
Fig. 1	THT-6-351-10	Vinyl	White	1.500 (38.1)	0.750 (19.1)	1.650 (41.9)	0.875 (22.2)	3.350 (85.1)	2	10,000	R6207
Fig. 2	THT-15-351-2.5	Vinyl	White	2.000 (50.8)	0.250 (6.4)	-	0.375 (9.5)	2.200 (55.9)	1	2,500	R6200
Fig. 2	THT-17-351-3	Vinyl	White	2.000 (50.8)	1.000 (25.4)	-	1.125 (28.6)	2.200 (55.9)	1	3,000	R6200
Fig. 2	THT-53-351-3	Vinyl	White	2.000 (50.8)	0.500 (12.7)	-	0.600 (15.2)	2.200 (55.9)	1	3,000	R6200
Fig. 2	THT-18-351-3	Vinyl	White	3.000 (76.2)	1.000 (25.4)	-	1.125 (28.6)	3.200 (81.3)	1	3,000	R6202
Fig. 2	THT-19-351-1	Vinyl	White	3.000 (76.2)	2.000 (50.8)	-	2.125 (54.0)	3.200 (81.3)	1	1,000	R6202

See all benchtop printer ribbon parts on page 152 and full material descriptions on pages 164-170.